

ROLL GROOVED STAINLESS STEEL GRADE 316 ADAPTORS

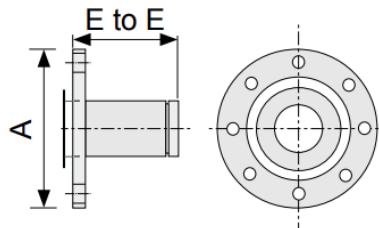
STAINLESS STEEL ROLL GROOVED STUB ADAPTOR FLANGE

(Suit Schedule 10S; Model # GT-428X)



AS 2129 - Flanges in Table D and E 304/316 ANSI Class 150, 304/316

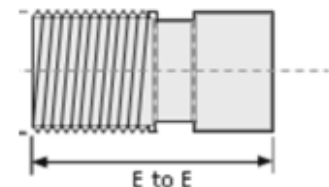
Product Code	Size	Pipe OD	Flange Dimension		Working Pressure	Bolt Size Diameter	No. of Bolt Holes
	DN	mm	A (mm)	E to E (mm)	kPa	(mm)	(Elongation)
FWSS-W-FS-60	50	60.3	160	80	2100	16	4
FWSS-W-FS-73	65	73.0	181	80	2100	16	4
FWSS-W-FS-88	80	88.9	194	80	2100	16	8
FWSS-FW-S-114	100	114.3	219	100	2100	16	8
FWSS-W-FS-168	150	168.3	282	100	2100	20	8
FWSS-W-FS-219	200	219.1	338	100	2100	20	8
FWSS-W-FS-273	250	273.0	-	150	2100	20	8
FWSS-W-FS-323	300	323.0	-	150	2100	20	8



STAINLESS STEEL ROLL GROOVED TO THREADED ADAPTOR (CAST)

(Roll Grooved to BSP Threaded Adaptor Model # GT-6302SM)

Product Code	Size	Pipe OD	E to E	Approx. Wt
	DN	mm	mm	kg
FWSS-SA-34-34	25	33.4	50	0.01
FWSS-SA-43-43	32	42.2	50	0.02
FWSS-SA-48-48	40	48.3	50	0.02
FWSS-SA-60-60	50	60.3	50	0.03
FWSS-SA-73-73	65	73.0	50	0.06
FWSS-SA-89-89	80	88.9	50	0.06
FWSS-SA-114-114	100	114.3	50	0.10



Note: These Cast SS316 Roll Grooved & BSP adaptors and not Watermarked certified.